



Introduction to Hopatcong Open Space Committee

and the 2025 Open Space and Recreation Survey

Rob Bond, Chair
Open Space Committee
rbond@hopatcong.org

Cliff Lundin, vice-Chair
Open Space Committee
clundin@hopatcong.org

November 6, 2025



Hopatcong State Park Annex

Photos by Rob Bond, unless otherwise noted

Open Space Committee - Origins



- In 1999 the voters of the Borough authorized an up to one-cent per \$100 of assessed valuation be collected for an "*Open Space and Recreation Fund*"
- In 2000 the Borough established nine-member committee who makes recommendations on how this fund should be used in support of recreation facility and open space updates/acquisitions
- Committee is also responsible for updating the Borough's *Open Space and Recreation Plan* (OSRP)
 - Update of 2011 OSRP is underway – *your inputs are needed on our Community Survey*
 - An OSRP simplifies the process for receiving State grants to update/improve recreation facilities and to acquire land for preservation and or recreation



Maxim Glen

Open Space and Recreation Plan (OSRP)

What is in the plan?



- Inventory: Recreation and Open Space
 - Undeveloped properties
 - Borough properties held for recreation and/or conservation purposes
 - State Public Property
 - Privately held properties under a conservation easement
 - Sites of local historical interest
- Assessment of Recreation Facilities (Parks, Fields, Playgrounds, etc.)
 - Inputs from the community (e.g., OSRP Survey)
 - Inputs from Hopatcong Recreation Commission, DPW, etc.
 - Consider not only the adequacy of what we have, but also what are we lacking
- Land Use Planning Considerations
 - Alignment with Highlands Regional and Borough Master Plans
- Action Plan: a road map to achieve the goals of the OSRP (which informs the recommendations on how to use the *Open Space and Recreation Fund*)



Hudson Farm Preserved Open Space



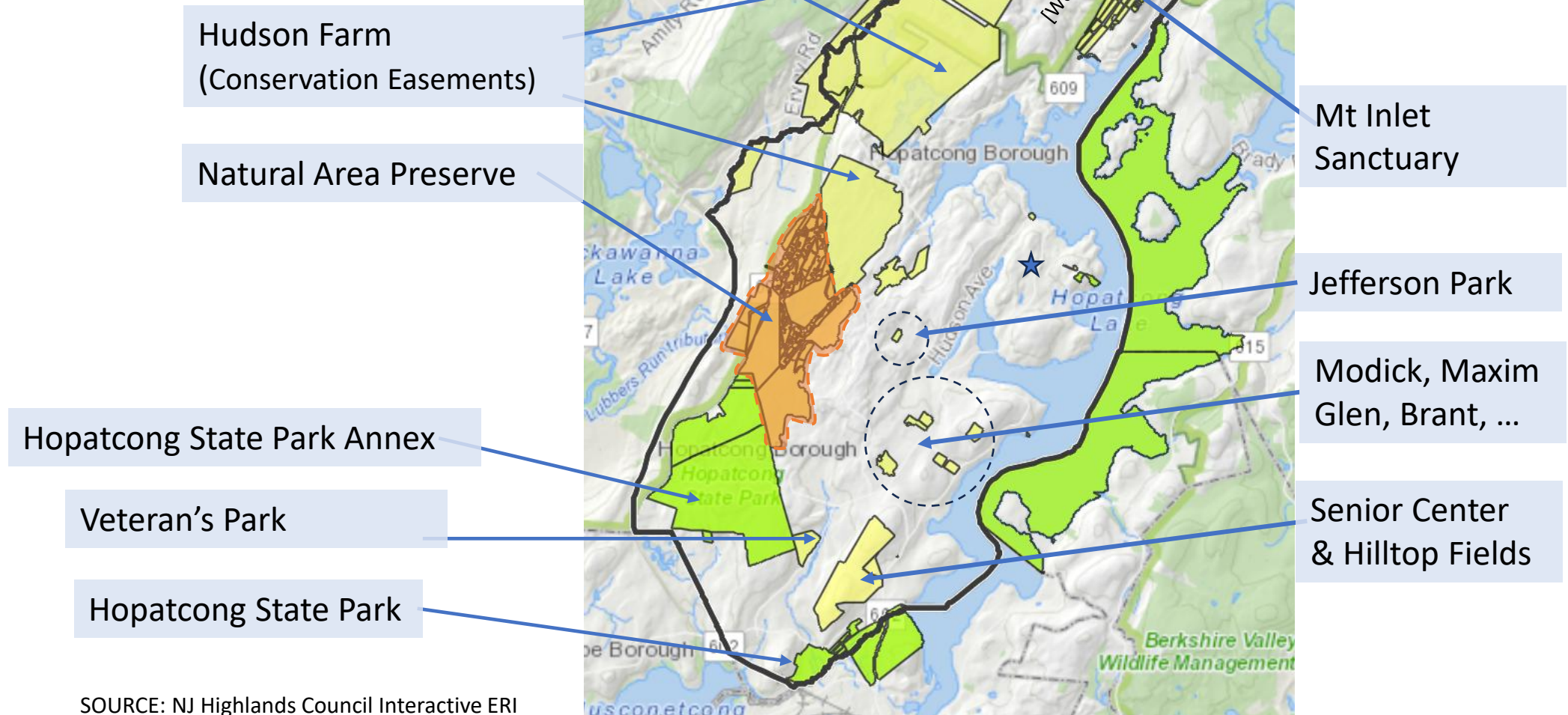
Required Elements of the Plan

1. Executive Summary
2. Community Profile
3. History of Open Space Funding
4. Recreation and Open Space Inventory
5. Public Engagement & Public Hearing:
 - a. Public engagement early in the planning process
 - i. Community survey
 - ii. Community meeting: after survey results are received and analyzed
 - b. Public hearing: once a draft plan has been prepared.
6. Goals and Policies
7. Environmental Analysis
8. Recreation Facilities Assessment
9. Land Use Planning Context
10. Action Plan
11. Comprehensive Open Space System Map

See Green Acres “[Open Space and Recreation Plan Guidelines for Local Governments](#)” for details.

Hopatcong Preserved Open Space

Green-Belt along the western edge of the Borough



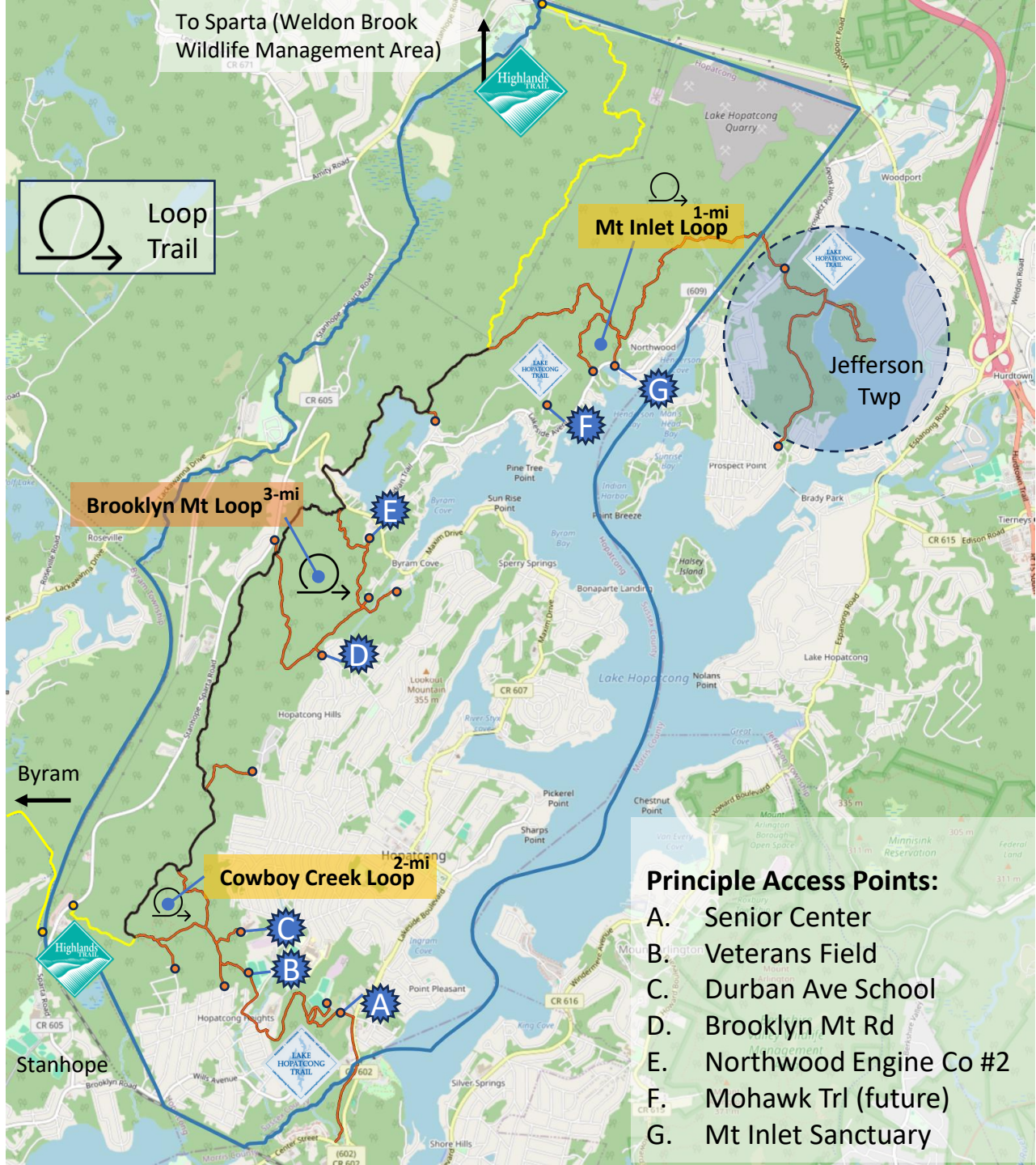
Hopatcong Trail Network

Trail Network hugs the western greenway



— + — = 17 miles of Trails

— = 4 miles of Trails



Principle Access Points:

- A. Senior Center
- B. Veterans Field
- C. Durban Ave School
- D. Brooklyn Mt Rd
- E. Northwood Engine Co #2
- F. Mohawk Trl (future)
- G. Mt Inlet Sanctuary





Hopatcong Parks and Outdoor Recreation Facilities

1. **Brant** (Skate Park, Roller Rink, Community Garden)
2. **Jefferson Park** (Dog Park, Field, Playground)
3. **Maxim Glen** (Walking Paths, Gazebo)
4. **Modick Park** (Basketball, Playground)
5. **Mt Inlet *** (Hiking, Kayaking, Fishing)
6. **Naritcong Field** (Baseball, T-Ball, Softball)
7. **Senior Center** (Pickleball/Tennis, Bocce Ball, Horseshoes)
8. **Senior Field** (privately held, Little League)
9. **Squire Field** (Soccer, Lacrosse)
10. **Thompson Playground**
11. **Veterans Park** (Softball, Soccer)
12. **Witten Park** (conservation)

* Part of the National Water Trails System



Thompson Playground

Open Space and Recreation Fund



- Borough fund dedicated to land acquisition for the purposes of conservation and recreation, as well as improvements to recreational facilities
- The following are examples of the allowed uses of the Hopatcong Open Space and Recreation Fund*
 - Acquisition of lands for recreation and conservation purposes
 - Development of lands acquired for recreation and conservation purposes
 - Maintenance of lands acquired for recreation and conservation purposes
 - Preservation of historic properties



* Per NJ statute NJSA 40:12-15.7 et seq.

2025 OSRP Update



- Recall, the OSRP is a prerequisite for State grant funding for parks and open spaces, as well as informs the use of the Borough's "*Open Space and Recreation Fund*"
- Work is fully funded by a planning grant from the NJ Highlands Council
 - The Land Conservancy of NJ leading the effort
 - Includes update to our Environmental Resource Inventory
- Public Engagement, including
 - Community Survey (Open through 22-Dec)
 - Public Meeting (Mid/late January 2026)



Mink (Photo courtesy of Jeremy Travers)

OSRP Community Survey – Seeks to Understand



- Which parks do you visit most?
- What do you like to do at these parks?
- Do you visit the trails?
- Where should Hopatcong expand or create new parks? How would you like to see your tax dollars used for parks and recreation?



Survey closes 22-December

Click [HERE](#) to open the survey or scan the QR-Code with your phone

Are parks and trails not your thing? If so, share the Survey Flyer with your adult children/grandchildren

Questions?

Rob Bond
rbond@hopatcong.org
862-251-3289

Cliff Lundin
clundin@hopatcong.org



Thank

You